

What We Do

As the state's regional Workforce Development Board in North Central Connecticut, Capital Workforce Partners and the American Job Center help individuals overcome barriers to employment and close the gap between skills and business hiring needs.

The misuse of prescription medication and opioid-based drugs has increased significantly over the years making it a public health concern in Connecticut. This crisis is affecting users and their families. It is our mission to assist families that have been impacted by the crisis directly or indirectly by sharing knowledge and resources for those impacted throughout the North Central Region. The goal is job placement and making sure recovery is a priority for each participant. At the job center we aim to meet our customers where they are and make a positive difference in their lives.



Peer Navigator Support includes:

- Peer to peer support and mentorship relating to the opioid crisis
- Preparing individuals and families to reach new career goals
- Assist individuals explore new training opportunities including LADC or CDAC certifications
- Assist with job placements at identified "Recovery Friendly" workplaces
- Identifying and overcoming barriers
- Supportive services
- Interview preparation and job readiness



Career Services

- Career Guidance Training
- Job Placement Assistance
- Career Coaching
- Referrals to Partner Programs
- Resume Writing Support
- Interview Prep
- Scholarships for Training
- Training and Certification Programs

Careers

Peer Navigator will work closely with Business Service Professionals to assist in job placement for customers who demonstrate strong work ethic in a suitable field. Common industries are: construction, food service and health care.

Careers in the Addiction Recovery Continuum of Care

- Train to become a Peer Recovery Coach-as a peer to peer guide through the journey to sustained recovery.
- A 300 hour counselor training program starts you on a path to become a Drug and Alcohol Recovery Counselor, Certified Addiction Counselor, Certified Alcohol, or Drug Counselor, or a Licensed Alcohol and Drug Counselor.

CITIES & TOWNS ELIGIBLE



Andover	Ellington	Plainville	Vernon
Avon	Enfield	Plymouth	West Hartford
Berlin	Farmington	Rocky Hill	Wethersfield
Bloomfield	Glastonbury	Simsbury	Windsor
Bolton	Granby	Southington	Windsor Locks
Bristol	Hartford	Somers	
Burlington	Hebron	South	
Canton	Manchester	Windsor	
East Granby	Marlborough	Stafford	
East Hartford	New Britain	Suffield	
East Windsor	Newington	Tolland	



Career Services Information Session (CSIS)
Come in ½ hour early to register.

Hartford Every Tuesday at 9:00 a.m.
Every Wednesday and Thursday at 1:00 p.m.

Hartford Public Library -1st and 3rd Tuesday of each Month at 11:00 a.m.

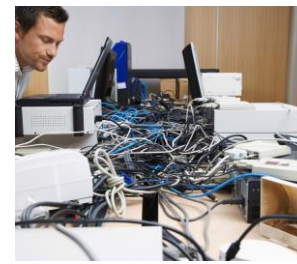
New Britain Every Tuesday at 9:00 a.m.
Every Wednesday and Thursday at 1:00 p.m.

Manchester Every Wednesday and Thursday at 1:00 p.m.

Enfield Every Wednesday at 10:00 a.m.
Every Thursday at 1:00 p.m.

Bristol 2nd and 4th Thursday of each month at 9:00 a.m.

East Hartford 1st and 3rd Monday of each month at 9:00 a.m.



National
Health
Emergency
“Recovery Works”
Opioid Grant

For more information, contact:

Randolph Ricketts

Office Phone: 860.656.3444

Email: rricketts@capitalworkforce.org



Capital Workforce Partners and the Connecticut Department of Labor are partners the American Job Center Network in North Central CT